

# Rotterdam Maritime Capital of Europe (RMC)

Welcome to Rotterdam, the maritime capital of Europe. Doing business here means operating at the forefront of the new economy. Important themes such as pioneering industrial technologies, digitization, the energy transition and circularity are not just on the to-do list; they are actively being tackled. Quickly adopting innovations for the entire maritime industry, such as autonomous navigation and emission-free propulsion systems, is an absolute requirement. In other words, doing business with or from Rotterdam means entering markets that are relatively new. Markets that we currently still define as niches.

Rotterdam is home of one of the most complete and competitive maritime clusters in the world. The tremendous diversity in maritime activities, that make the region distinctive worldwide, can be subdivided into six overarching maritime subclusters: Innovation, Maritime Business Services, Commodity Trading, Port & Logistics, Shipbuilding & Offshore and Energy & Industry.

We are and will continue to be the maritime capital of Europe because we seek to connect with each other and collaborate in broad interaction between new and existing players in the maritime industry and services. Economies of scale and diversity are key considerations and the forces of supply and demand keep us alert. We owe our leading position to the complete network here and the knowledge that we can make a difference when we pool our resources. It is the place to be for industry, freight forwarders, producers, banks, insurers, transport specialists, traders, shipbuilders in combination with high tech start-ups, specialised education and innovative research centres. Because everything is available and nearby in this region, you are always a step ahead of the competition.

## WHY DO BUSINESS IN ROTTERDAM MARITIME CAPITAL?

In Rotterdam, you can have instant face-to-face contact with your customer, supplier, business partner or your newest talent. Agreements are reached quickly, and speed and quality give you a competitive advantage; thanks to keenly calculated prices that make your business a winning contender. The central location in proximity to Amsterdam and Antwerp, and fast connections to Germany and the European hinterland are all extra benefits. This appealing and strategic geographical location is backed up by a generous supply of affordable office space and attractive tax incentives. Furthermore, people like to live and work in this international city with its extensive offer of good housing, education, culture, architecture, restaurants and nightlife.

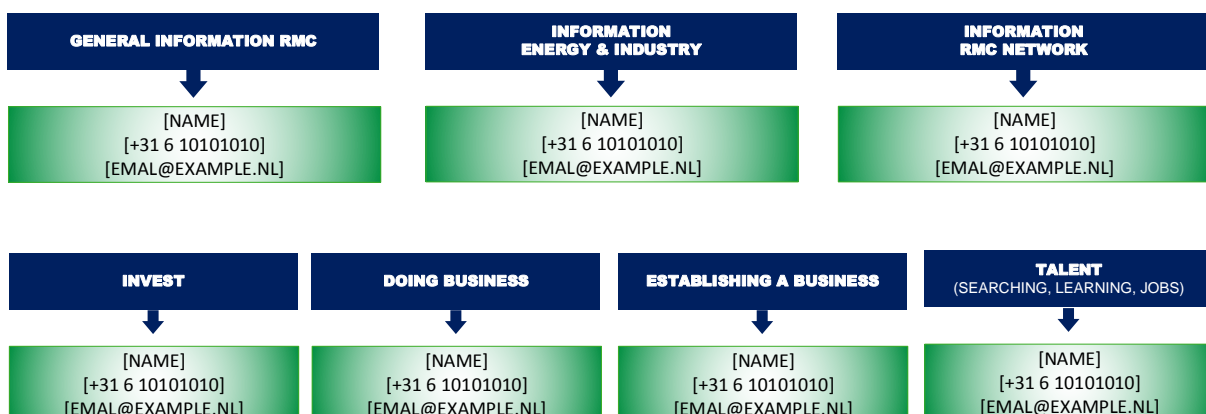
## Cluster Energy & Industry Unique Selling Points

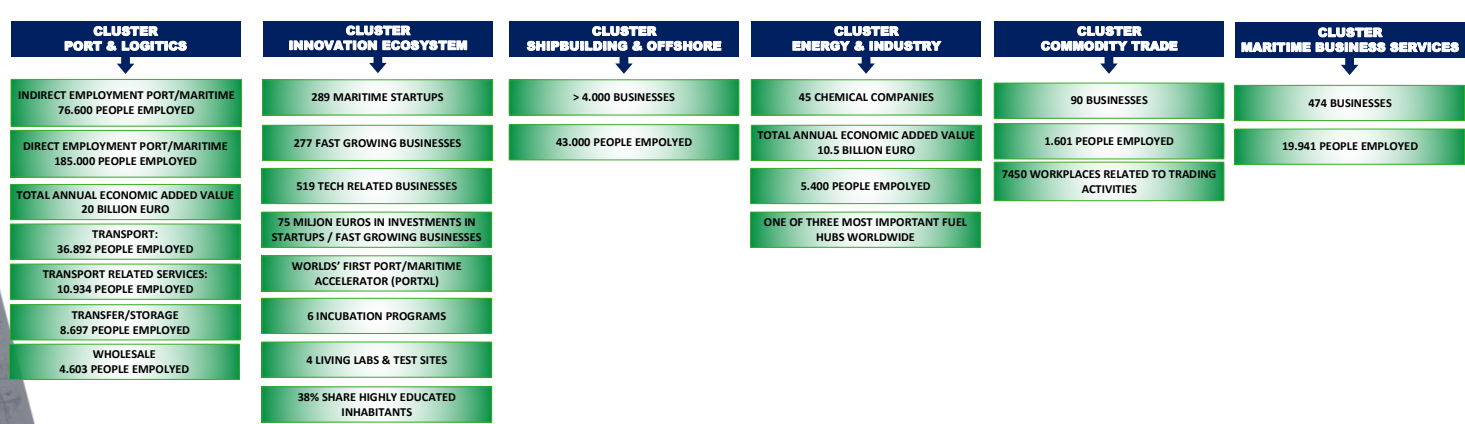
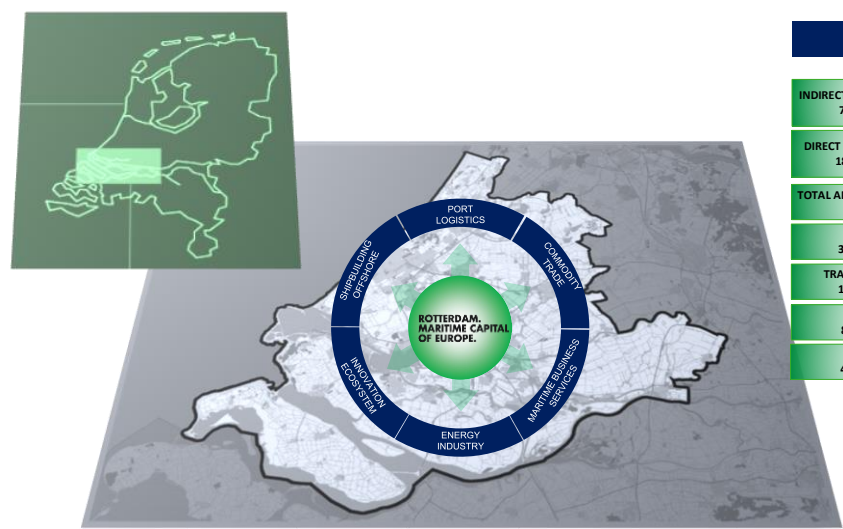
- Close cooperation between energy producers, refineries and producers of chemical products;
- Strongly integrated industry cluster paves the way to shared competitive advantages;
- Extensive network of pipelines and other modalities;
- One of the three most important fuel hubs in the world.
- excellent and affordable living;
- premium and available office spaces;
- good and fast connections to Schiphol, The Hague Airport, Amsterdam, Brussels and Antwerp;
- reliable digital infrastructure.



## Contact

Do you want to learn more about Rotterdam Maritime Capital or the RMC strategy? Contact us through one of the following channels to get in touch!





## Energy & Industry Cluster

The port of Rotterdam is one of the world's most important hubs for cargo flows. Almost half of that cargo consists of energy. Rotterdam Energy Port is the North-West European hub for the arrival, production and distribution of energy streams. Originally conventional but quickly transforming to a more and more sustainable mix, ensuring a reduced carbon footprint.

Rotterdam is committed to combating climate change and wants to play an important role in the global energy transition. The reduction of CO2 emissions and efficient use of raw and residual materials are important tasks for the Port of Rotterdam Authority. The Port of Rotterdam Authority wants to develop the port area in such a way that it becomes a flagship region for shaping the energy transition.

This energy transition is characterised, like any transition, by a phasing out, optimisation of the existing system and renewal of systems. Springing from Rotterdam Maritime Capital's ambition, the focus is put on innovation of energy systems. Many parties have already investigated issues regarding optimisation. To make an actual transition from a fossil to a non-fossil energy system a success however, intensifying the innovation of the energy system is a necessity. In 2018, the different possible ways in which the RMC network can contribute to innovating the energy system in the port and maritime cluster were listed. This resulted in an implementation program in which stimulating and attracting innovation plays a central role.

## What is Rotterdam Maritime Capital of Europe (RMC)?

Rotterdam Maritime Capital embodies the drive to be one of the most competitive maritime clusters in the world.

Through collaboration with a host of different partners, the RMC network tackles important subjects like the energy transition, digitization and circularisation and continuously improves the competitiveness of its maritime cluster.

Because of this diverse network of collaboration and cooperation, RMC creates the most diverse maritime cluster possible. In this environment, businesses can thrive, and strategic resources are always close by.

The Maritime Capital has set ambitious goals for the coming years with its 2030 strategy. It strives to innovate and blaze new trails whilst retaining its original strengths, keeping a healthy focus on sustainability and environment whilst renewing the port.